



DynaWeld GmbH & Co. KG

E-Mail: info@dynaweld.de

Web: www.dynaweld.eu

<http://www.dynaweld.info/produkte/weldware/>

DynaWeld South:	Herdweg 13	D-75045	Wössingen	Tel: +49 7203 329 023
DynaWeld North:	Hermann-Löns-Straße 3A	D-21382	Brietlingen	Tel: +49 4133 400 88 63
DynaWeld Kamen:	Herbert-Wehner-Straße 2	D-59174	Kamen	Tel: +49 2307 500 05 05

WeldWare®
is a software from:

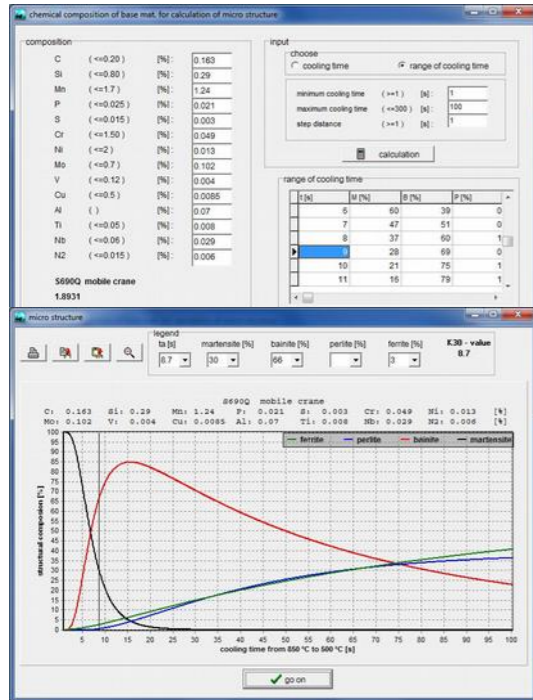


SLV Mecklenburg-
Vorpommern GmbH
Alter Hafen Süd 4
D-18069 Rostock



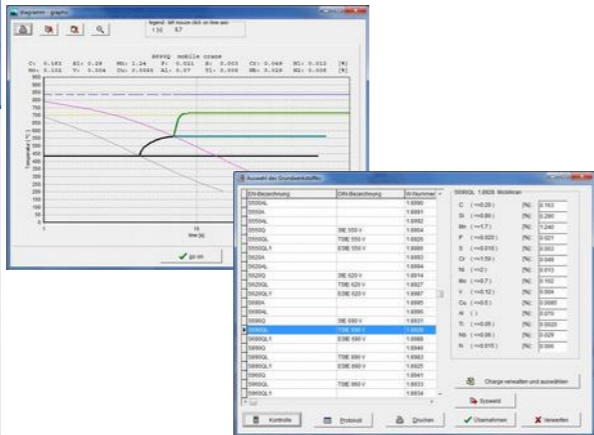
A must have for Welders!
Welding Advisory System

WeldWare®



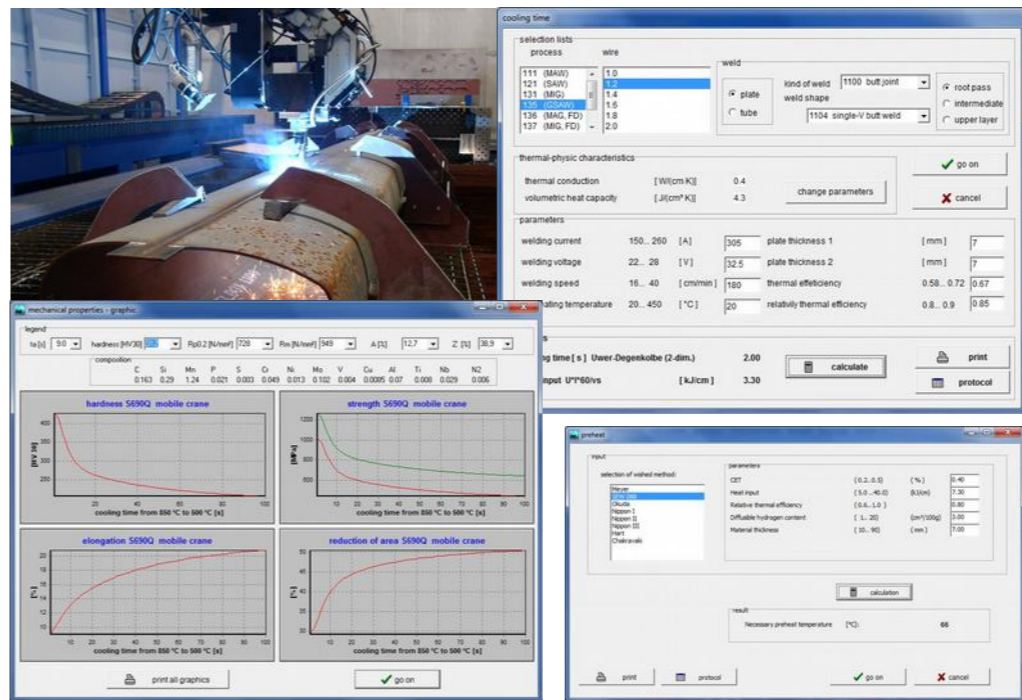
Research across decades combined in one software

Heat management during welding of steel – structure transformations and properties in the heat effective zone



WeldWare® Features:

- Materials with individual heat administration
- Cooling time
- Minimum heat input
- Welding parameters
- Preheating temperature
- Multi wire welding
- Carbon equivalent
- Welding-cct-diagram
- Structure composition
- Mechanical properties
- Temperature cycle
- Post heating
- Maximum hardness
- Heat scattering
- Affinity to cold cracks
- Geometry
- Strength fracture



Your Benefit:

- Fast decisions in production and repair
- Optimisation of costs with covering of product quality
- A system based on the world wide biggest collection of material data for welding simulation
- Scientifically founded results

WeldWare® serves...

- the calculation of the heat management before welding
- the calculation of microstructure and mechanical properties in the HAZ
- the determination of necessary pre-heating temperatures at real components
- the supply of data for FEA

WeldWare® uses

- heat comprehensive regression equations
- welding-cct-diagrams measured by SLV Mecklenburg-Vorpommern GmbH
- corresponding material data
- cooling time equations